

# SCOUT

MODEL • AGENCY

MARICA R. MAIN

HEIGHT 178 cm BUST/WAIST/HIPS 85/60/92 cm EYES blue HAIR blonde SHOES 38 LOCATION Milan IT



# SCOUT

MODEL ● AGENCY

MARICA R. MAIN

HEIGHT 178 cm BUST/WAIST/HIPS 85/60/92 cm EYES blue HAIR blonde SHOES 38 LOCATION Milan IT

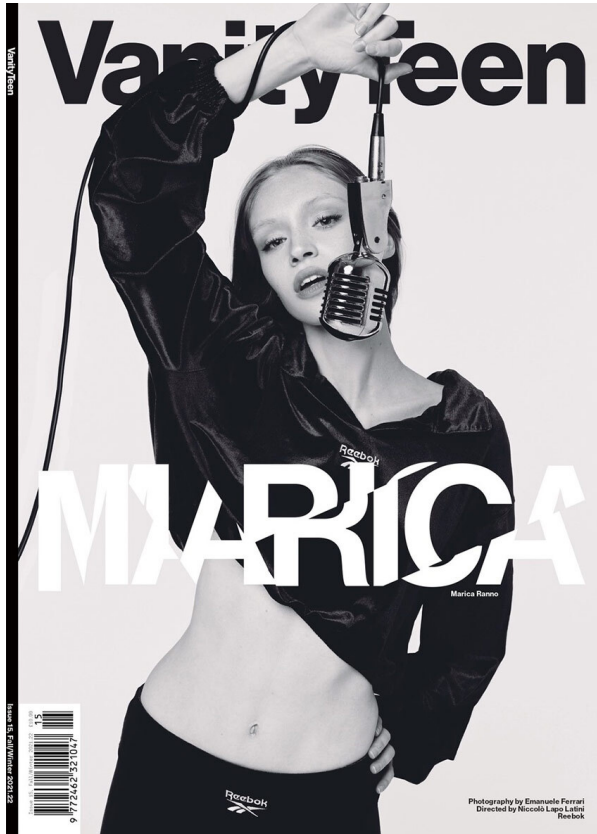


# SCOUT

MODEL • AGENCY

MARICA R. MAIN

HEIGHT 178 cm BUST/WAIST/HIPS 85/60/92 cm EYES blue HAIR blonde SHOES 38 LOCATION Milan IT



# SCOUT

MODEL • AGENCY

MARICA R. MAIN

HEIGHT 178 cm BUST/WAIST/HIPS 85/60/92 cm EYES blue HAIR blonde SHOES 38 LOCATION Milan IT



# SCOUT

MODEL • AGENCY

MARICA R. MAIN

HEIGHT 178 cm BUST/WAIST/HIPS 85/60/92 cm EYES blue HAIR blonde SHOES 38 LOCATION Milan IT

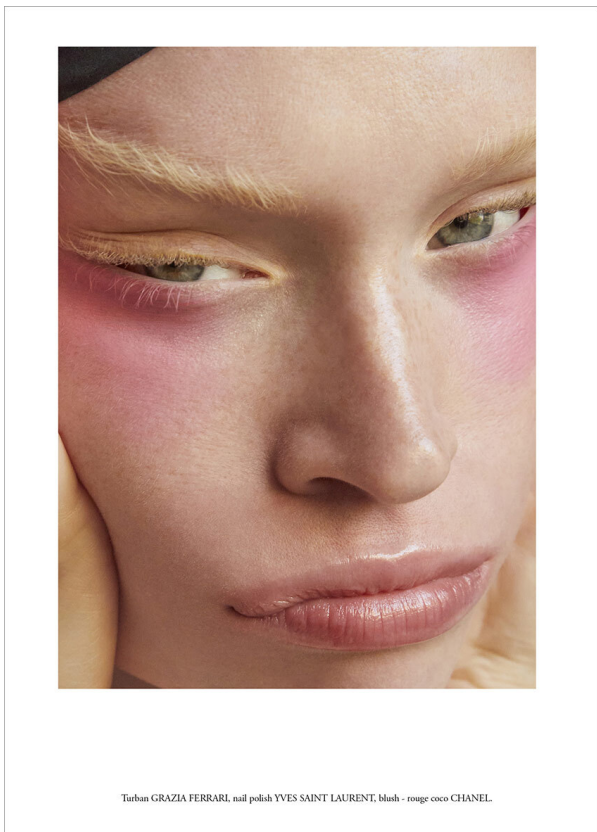


# SCOUT

MODEL • AGENCY

MARICA R. MAIN

HEIGHT 178 cm BUST/WAIST/HIPS 85/60/92 cm EYES blue HAIR blonde SHOES 38 LOCATION Milan IT



Turban GRAZIA FERRARI, nail polish YVES SAINT LAURENT, blush - rouge coco CHANEL



## STARGAZE

Photographer ILARIA BONCOMPAGNI, Make-up SARA DEL RE-HAIR

# SCOUT

MODEL • AGENCY

MARICA R. MAIN

HEIGHT 178 cm BUST/WAIST/HIPS 85/60/92 cm EYES blue HAIR blonde SHOES 38 LOCATION Milan IT



photography: Eleanora Vergnano  
fashion: Silvia Maggi  
model: Marica Ranno @ Wonderwell Management  
make up + hair: Nicole Sordi  
photography assistant: Ariana Ferrari



# SCOUT

MODEL • AGENCY

MARICA R. MAIN

HEIGHT 178 cm BUST/WAIST/HIPS 85/60/92 cm EYES blue HAIR blonde SHOES 38 LOCATION Milan IT

